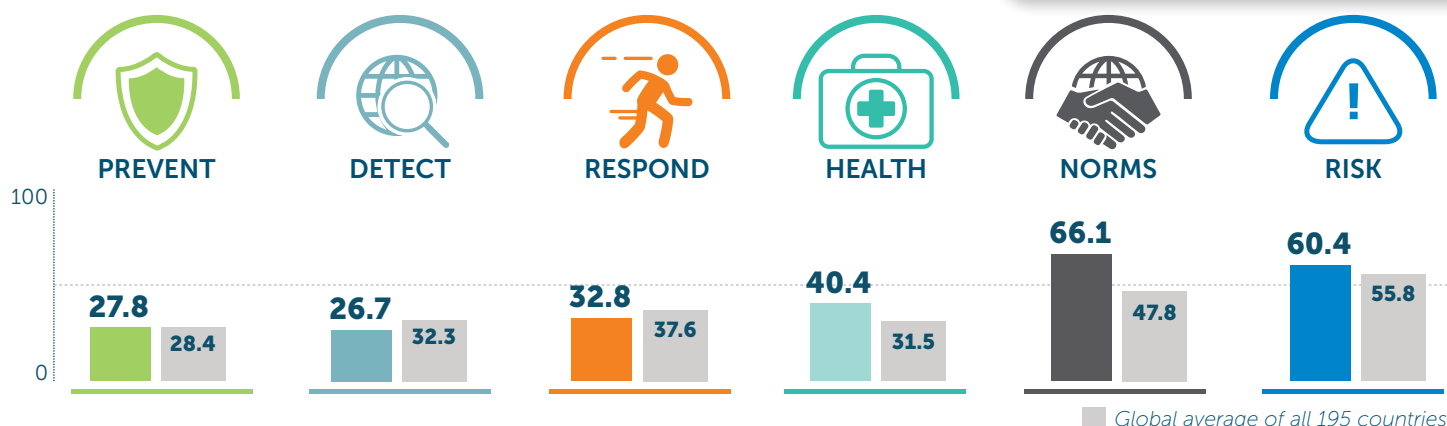


Kyrgyz Republic

42.4 Index Score

68/195



	2019 SCORE	2021 SCORE	2021 GLOBAL AVERAGE
PREVENTION	27.5	27.8	28.4
Antimicrobial resistance (AMR)	33.3	33.3	45.3
Zoonotic disease	11.9	13.7	19.8
Biosecurity	20	20	18.7
Biosafety	0	0	20.9
Dual-use research and culture of responsible science	0	0	2.6
Immunization	100	100	63.3
DETECTION AND REPORTING	26.7	26.7	32.3
Laboratory systems strength and quality	62.5	62.5	44.9
Laboratory supply chains	0	0	15.9
Real-time surveillance and reporting	62.5	62.5	34.6
Surveillance data accessibility and transparency	10	10	34.7
Case-based investigation	0	0	16.9
Epidemiology workforce	25	25	46.5
RAPID RESPONSE	36.5	32.8	37.6
Emergency preparedness and response planning	50	50	30.4
Exercising response plans	0	37.5	21.1
Emergency response operation	0	0	27
Linking public health and security authorities	0	0	22.1
Risk communication	66.7	66.7	57.9
Access to communications infrastructure	63.8	75.6	65.7
Trade and travel restrictions	75	0	39

	2019 SCORE	2021 SCORE	2021 GLOBAL AVERAGE
HEALTH SYSTEM	40.5	40.4	31.5
Health capacity in clinics, hospitals, and community care centers	14.6	14.5	30
Supply chain for health system and healthcare workers	83.3	83.3	28.5
Medical countermeasures and personnel deployment	0	0	10.3
Healthcare access	60.3	60.3	55.2
Communications with health-care workers during a public health emergency	0	0	10.8
Infection control practices	100	100	40.5
Capacity to test and approve new medical countermeasures	25	25	45.1
COMPLIANCE WITH INTERNATIONAL NORMS	67	66.1	47.8
IHR reporting compliance and disaster risk reduction	100	100	58.5
Cross-border agreements on public and health emergency response	50	50	50
International commitments	43.8	46.9	56.1
JEE and PVS	75	75	18.7
Financing	66.7	58.3	35.2
Commitment to sharing of genetic and biological data and specimens	66.7	66.7	68.4
RISK ENVIRONMENT	60.1	60.4	55.8
Political and security risk	56.7	54.9	58.1
Socio-economic resilience	66.2	66.4	60.9
Infrastructure adequacy	41.7	41.7	50.2
Environmental risks	71.6	74.4	54.7
Public health vulnerabilities	64.1	64.3	55.3

Scores are normalized (0–100, where 100 = most favorable)